

Cohort, Exam 1**Ultrasound Data**

Observed Measurements in file UBMD4

Original Derived Variables (See diagram for graphic illustration)

1. mx23: maximum near wall thickness is the maximum of all available (up to eleven) distances between pairs of points on the near wall, using splined data when five or more points were actually read in an interface, or using only observed data when four or less points were read.

There is a *mx23 for every site, where A*≡ is one of the prefixes listed in Appendix A, corresponding to the specific site.

lanamx23	lbiamx23	linamx23	lopamx23	lpoamx23
ranamx23	rbiamx23	rinamx23	ropamx23	rpoamx23
lppamx23	qclamx23			
rppamx23	qc2amx23			

2. mx45: is similarly defined, for the far wall

There is a *mx45 for every site, where A*≡ is one of the prefixes listed in Appendix A, corresponding to the specific site.

lanamx45	lbiamx45	linamx45	lopamx45	lpoamx45
ranamx45	rbiamx45	rinamx45	ropamx45	rpoamx45
lppamx45	qc1amx45			
rppamx45	qc2amx45			

3. av45: mean far wall thickness, is the arithmetic mean of all available (up to eleven) distances between pairs of points on the far wall, using splined data when five or more points were actually read in an interface, or using only observed data when four or less points were read.

There is a *av45 for every site, where A*≡ is one of prefixes listed in Appendix A, corresponding to the specific site.

lanaav45	lbiaav45	linaav45	lopaav45	lpoaav45
ranaav45	rbiaav45	rinaav45	ropaav45	rpoaav45
lppaav45	qc1aav45			
rppaav45	qc2aav45			

4. av23: is similarly defined, for the rear wall

there is a *av23 for every site, where A*≡ is one of the prefixes listed in Appendix A, corresponding to the specific site.

lanaav23	lbiaav23	linaav23	lopaav23	lpoaav23
ranaav23	rbiaav23	rinaav23	ropaav23	rpoaav23
lppaav23	qc1aav23			
rppaav23	qc2aav23			

5. av25: arterial diameter is similarly defined, as the mean of all available 2-5 distances

There is a *av25 for every site, where A*≡ is one of the prefixes listed in Appendix A, corresponding to the specific site.

lanaav25	lbiaav25	linaav25	lopaav25	lpoaav25
ranaav25	rbiaav25	rinaav25	ropaav25	rpoaav25
lppaav25	qc1aav25			
rppaav25	qc2aav25			

6. mn34: minimum lumen diameter, is the minimum of all available (up to eleven) distances between pairs of points on the 3-4 interfaces, using splined data when five or more points were actually read in an interface, or using only observed data when four or less points were read.

There is a *mn34 for every site, where A*≡ is one of the prefixes listed in Appendix A, corresponding to the specific site.

Cohort, Exam 1

lanamn34	lbiamn34	linamn34	lopamn34	lpoamn34
ranamn34	rbiamn34	rinamn34	ropamn34	rpoamn34
lppamn34	qc1amn34			
rppamn34	qc2amn34			

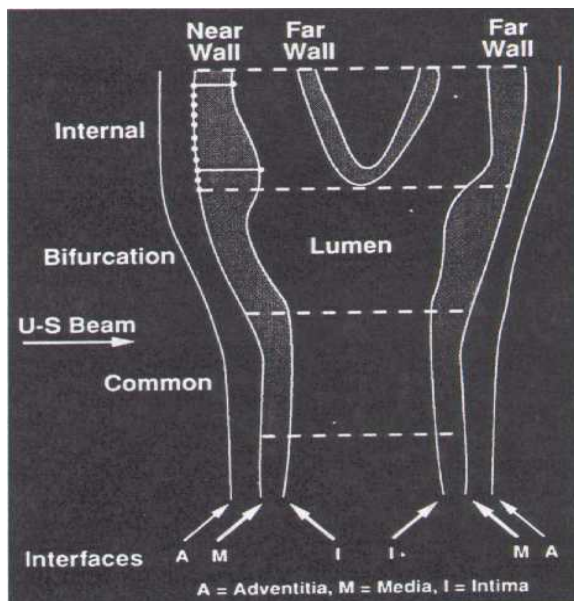
7. DEPTH01 is the overall average depth in pixels
8. DEPTH02 is the overall average depth in millimeters
9. QC01 is the site name of the first repeat site scanned
10. QC02 is the site name of the second repeat site scanned
11. QCCNT is the number of QC sites with repeated scans

Cohort, Exam 1**Appendix A**

B-Mode Derived Variable Site Prefixes

LAN	Left Common Carotid: Anterior Angle
RAN	Right Common Carotid: Anterior Angle
LBI	Left Bifurcation
RBI	Right Bifurcation
LIN	Left Internal Carotid
RIN	Right Internal Carotid
LOP	Left Common Carotid: Optimal Angle
ROP	Right Common Carotid: Optimal Angle
LPO	Left Common Carotid: Posterior Angle
RPO	Right Common Carotid: Posterior Angle
LPP	Left Popliteal
RPP	Right Popliteal
QC1	First QC Repeat Scan (refer to QC01 for site identification)
QC2	Second QC Repeat Scan (refer to QC02 for site identification)

Schematic Overview of Carotid Artery B-Mode Ultrasound Measurements



Interfaces:	1-	Boundary between the periadventitia and adventitia of the near wall (not measured)
	2-	Boundary between the adventitia and media of the near wall
	3-	Boundary between the intima of the near wall and the blood
	4-	Boundary between blood and intima of the far wall
	5-	Boundary between media and adventitia of the far wall
	6-	Boundary between adventitia and periadventitia of the far wall (not measured)

Max 23 = B-A; Max 45 = D-C; Min 34 = H-G

The extracranial carotid system is divided into one-centimeter segments: I = internal carotid; II = carotid bifurcation; III = common carotid. A maximum of eleven measurements is made by URC readers on each arterial wall interface, in each arterial segment. These measurements are placed equidistant at 1 millimeter intervals, represented by the eleven points placed on interface B2 on the internal carotid. Also shown on this schematic is the definition of a maximum and a minimum wall thickness variable.

Cohort, Exam 1**Ultrasound Data**

Ultrasound Variables Observed

<i>CENTER</i>		<i>ARIC field center (Cir)</i>
<i>N</i>	<i>Value</i>	<i>Description</i>
3715	F	Forsyth County
3289	J	Jackson City
3549	M	Minneapolis Townships, MN
3628	W	Washington County, MD
1255		Missing

<i>DEPTH01</i>		<i>Overall average depth variable in pixels</i>
<i>N</i>	<i>Value</i>	<i>Description</i>
15353	Range	149.5455 - 508.5 (median=345.946 mean=346.4604 std=59.9775)
83		Missing

<i>DEPTH02</i>		<i>Overall average depth variable in mm</i>
<i>N</i>	<i>Value</i>	<i>Description</i>
15353	Range	10.01955 - 34.0695 (median=23.17838 mean=23.212846 std=4.018494)
83		Missing

<i>ID</i>		<i>Aric Subject ID (Cir)</i>
<i>N</i>	<i>Value</i>	<i>Description</i>
15436	Present	Text suppressed

<i>LANAAV23</i>		<i>Average near wall width, left common carotid: anterior angle</i>
<i>N</i>	<i>Value</i>	<i>Description</i>
7356	Range	0.15075 - 2.9145 (median=0.628963 mean=0.6586922 std=0.2077872)
8080		Missing

<i>LANAAV25</i>		<i>Average artery diamter, left common carotid: anterior angle</i>
<i>N</i>	<i>Value</i>	<i>Description</i>
14443	Range	4.013909 - 13.57867 (median=7.589273 mean=7.7006651 std=0.9084358)
993		Missing

Cohort, Exam 1

<i>LANAAV45</i>		<i>Average far wall width, left common carotid: anterior angle</i>
<i>N</i>	<i>Value</i>	<i>Description</i>
10649	Range	0.134 - 2.814 (median=0.644875 mean=0.6668646 std=0.1701890)
4787		Missing

<i>LANADEEP</i>		<i>Depth, left common carotid: anterior angle</i>
<i>N</i>	<i>Value</i>	<i>Description</i>
14666	Range	99.66667 - 511 (median=303.9091 mean=310.33726 std=79.12362)
770		Missing

<i>LANAMN34</i>		<i>Minimum lumen diameter, left common carotid: anterior angle</i>
<i>N</i>	<i>Value</i>	<i>Description</i>
6244	Range	3.015 - 11.323 (median=6.164 mean=6.2403 std=0.8142)
9192		Missing

<i>LANAMX23</i>		<i>Maximum near wall width, left common carotid: anterior angle</i>
<i>N</i>	<i>Value</i>	<i>Description</i>
7356	Range	0.201 - 4.02 (median=0.737 mean=0.7566 std=0.2420)
8080		Missing

<i>LANAMX45</i>		<i>Maximum far wall width, left common carotid: anterior angle</i>
<i>N</i>	<i>Value</i>	<i>Description</i>
10649	Range	0.134 - 3.417 (median=0.737 mean=0.7693 std=0.2159)
4787		Missing

<i>LBIAAV23</i>		<i>Average near wall width, left bifurcation</i>
<i>N</i>	<i>Value</i>	<i>Description</i>
6227	Range	0.067 - 4.879833 (median=0.737 mean=0.8478 std=0.4406)
9209		Missing

<i>LBIAAV25</i>		<i>Average artery diameter, left bifurcation</i>
<i>N</i>	<i>Value</i>	<i>Description</i>
13287	Range	3.435273 - 20.8705 (median=9.1388 mean=9.37138 std=1.62452)
2149		Missing

Cohort, Exam 1

<i>LBIAAV45</i>		<i>Average far wall width, left bifurcation</i>
<i>N</i>	<i>Value</i>	<i>Description</i>
8920	Range	0.223333 - 4.198667 (median=0.745375 mean=0.8346952 std=0.3686735)
6516		Missing

<i>LBIADEEP</i>		<i>Depth, left bifurcation</i>
<i>N</i>	<i>Value</i>	<i>Description</i>
13943	Range	142.4545 - 510 (median=355 mean=354.6 std=65.7)
1493		Missing

<i>LBIAMN34</i>		<i>Minimum lumen diameter, left bifurcation</i>
<i>N</i>	<i>Value</i>	<i>Description</i>
4390	Range	1.273 - 17.219 (median=6.499 mean=6.7668 std=1.4182)
11046		Missing

<i>LBIAMX23</i>		<i>Maximum lumen diameter, left bifurcation</i>
<i>N</i>	<i>Value</i>	<i>Description</i>
6227	Range	0.067 - 6.566 (median=0.871 mean=1.0331 std=0.5901)
9209		Missing

<i>LBIAMX45</i>		<i>Maximum far wall width, left bifurcation</i>
<i>N</i>	<i>Value</i>	<i>Description</i>
8920	Range	0.268 - 6.097 (median=0.871 mean=1.0506 std=0.5451)
6516		Missing

<i>LINAIV23</i>		<i>Average near wall width, left internal carotid</i>
<i>N</i>	<i>Value</i>	<i>Description</i>
3724	Range	0.134 - 4.958 (median=0.6365 mean=0.74577 std=0.41332)
11712		Missing

<i>LINAIV25</i>		<i>Average artery diameter, left internal carotid</i>
<i>N</i>	<i>Value</i>	<i>Description</i>
12623	Range	3.739818 - 14.8405 (median=7.973 mean=8.0291 std=1.2768)
2813		Missing

Cohort, Exam 1

<i>LINAIV45</i>		<i>Average far wall width, left internal carotid</i>
<i>N</i>	<i>Value</i>	<i>Description</i>
6146	Range	0.201 - 5.270667 (median=0.603 mean=0.6884 std=0.3665)
9290		Missing

<i>LINADEEP</i>		<i>Depth, left internal carotid</i>
<i>N</i>	<i>Value</i>	<i>Description</i>
13454	Range	122.3333 - 509.5 (median=327.2361 mean=329.49424 std=68.34845)
1982		Missing

<i>LINAMN34</i>		<i>Minimum lumen diameter, left internal carotid</i>
<i>N</i>	<i>Value</i>	<i>Description</i>
2105	Range	0.67 - 12.998 (median=6.7 mean=6.69 std=1.45)
13331		Missing

<i>LINAMX23</i>		<i>Maximum near wall width, left internal carotid</i>
<i>N</i>	<i>Value</i>	<i>Description</i>
3724	Range	0.134 - 5.36 (median=0.737 mean=0.8682 std=0.5131)
11712		Missing

<i>LINAMX45</i>		<i>Maximum far wall width, left internal carotid</i>
<i>N</i>	<i>Value</i>	<i>Description</i>
6146	Range	0.201 - 5.494 (median=0.737 mean=0.8247 std=0.4670)
9290		Missing

<i>LOPAIV23</i>		<i>Average near wall width, left common carotid: optimal angle</i>
<i>N</i>	<i>Value</i>	<i>Description</i>
9995	Range	0.178667 - 2.957571 (median=0.603 mean=0.6369 std=0.1912)
5441		Missing

<i>LOPAIV25</i>		<i>Average artery diameter, left common carotid: optimal angle</i>
<i>N</i>	<i>Value</i>	<i>Description</i>
14507	Range	4.1808 - 14.3581 (median=7.564909 mean=7.6873184 std=0.9313608)
929		Missing

Cohort, Exam 1

<i>LOPAAV45</i>		<i>Average far wall width, left common carotid: optimal angle</i>
<i>N</i>	<i>Value</i>	<i>Description</i>
12195	Range	0.220143 - 2.698273 (median=0.639545 mean=0.6681874 std=0.1799581)
3241		Missing

<i>LOPADEEP</i>		<i>Depth, left common carotid: optimal angle</i>
<i>N</i>	<i>Value</i>	<i>Description</i>
14595	Range	101.0909 - 510 (median=335.1818 mean=337.80348 std=66.89994)
841		Missing

<i>LOPAMN34</i>		<i>Minimum lumen diameter, left common carotid: optimal angle</i>
<i>N</i>	<i>Value</i>	<i>Description</i>
9135	Range	0.804 - 11.658 (median=6.097 mean=6.2028 std=0.8061)
6301		Missing

<i>LOPAMX23</i>		<i>Maximum near wall width, left common carotid: optimal angle</i>
<i>N</i>	<i>Value</i>	<i>Description</i>
9995	Range	0.201 - 4.556 (median=0.737 mean=0.7477 std=0.2306)
5441		Missing

<i>LOPAMX45</i>		<i>Maximum far wall width, left common carotid: optimal angle</i>
<i>N</i>	<i>Value</i>	<i>Description</i>
12195	Range	0.268 - 3.417 (median=0.737 mean=0.7907 std=0.2401)
3241		Missing

<i>LPOAAV23</i>		<i>Average near wall width, left common carotid: posterior angle</i>
<i>N</i>	<i>Value</i>	<i>Description</i>
8917	Range	0.1206 - 3.240364 (median=0.594625 mean=0.6218695 std=0.1890074)
6519		Missing

<i>LPOAAV25</i>		<i>Average artery diameter, left common carotid: posterior angle</i>
<i>N</i>	<i>Value</i>	<i>Description</i>
13987	Range	3.886 - 14.98288 (median=7.522273 mean=7.6395882 std=0.9284808)
1449		Missing

Cohort, Exam 1

<i>LPOAAV45</i>		<i>Average far wall width, left common carotid: posterior angle</i>
<i>N</i>	<i>Value</i>	<i>Description</i>
10865	Range	0.201 - 3.33325 (median=0.633455 mean=0.6614477 std=0.1848484)
4571		Missing

<i>LPOADEEP</i>		<i>Depth, left common carotid: posterior angle</i>
<i>N</i>	<i>Value</i>	<i>Description</i>
14119	Range	125 - 511 (median=354 mean=357.2 std=65.1)
1317		Missing

<i>LPOAMN34</i>		<i>Minimum lumen diameter, left common carotid: posterior angle</i>
<i>N</i>	<i>Value</i>	<i>Description</i>
7944	Range	3.752 - 11.256 (median=6.097 mean=6.1831 std=0.8042)
7492		Missing

<i>LPOAMX23</i>		<i>Maximum near wall width, left common carotid: posterior angle</i>
<i>N</i>	<i>Value</i>	<i>Description</i>
8917	Range	0.134 - 4.221 (median=0.67 mean=0.727 std=0.230)
6519		Missing

<i>LPOAMX45</i>		<i>Maximum far wall width, left common carotid: posterior angle</i>
<i>N</i>	<i>Value</i>	<i>Description</i>
10865	Range	0.268 - 5.226 (median=0.737 mean=0.7793 std=0.2438)
4571		Missing

<i>LPPAAV23</i>		<i>Average near wall width, left popliteal</i>
<i>N</i>	<i>Value</i>	<i>Description</i>
3754	Range	0.15075 - 1.7822 (median=0.469 mean=0.4952 std=0.1706)
11682		Missing

<i>LPPAAV25</i>		<i>Average artery diameter, left popliteal</i>
<i>N</i>	<i>Value</i>	<i>Description</i>
5933	Range	2.434333 - 10.452 (median=5.987364 mean=6.0784239 std=1.0829547)
9503		Missing

Cohort, Exam 1

<i>LPPAAV45</i>		<i>Average far wall width, left popliteal</i>
<i>N</i>	<i>Value</i>	<i>Description</i>
5129	Range	0.1675 - 2.4589 (median=0.5829 mean=0.61501 std=0.20109)
10307		Missing

<i>LPPADEEP</i>		<i>Depth, left popliteal</i>
<i>N</i>	<i>Value</i>	<i>Description</i>
6493	Range	130.2222 - 511 (median=375.6667 mean=375.46356 std=63.98586)
8943		Missing

<i>LPPAMN34</i>		<i>Minimum lumen diameter, left popliteal</i>
<i>N</i>	<i>Value</i>	<i>Description</i>
3344	Range	2.278 - 9.38 (median=4.824 mean=4.9022 std=0.9639)
12092		Missing

<i>LPPAMX23</i>		<i>Maximum lumen diameter, left popliteal</i>
<i>N</i>	<i>Value</i>	<i>Description</i>
3754	Range	0.201 - 2.077 (median=0.536 mean=0.5744 std=0.2053)
11682		Missing

<i>LPPAMX45</i>		<i>Maximum far wall width, left popliteal</i>
<i>N</i>	<i>Value</i>	<i>Description</i>
5129	Range	0.201 - 3.618 (median=0.67 mean=0.724 std=0.258)
10307		Missing

<i>OUTRANGE</i>		<i>OUTRANGE</i>
<i>N</i>	<i>Value</i>	<i>Description</i>
107	1	
15329		Missing

<i>PREMAY15</i>		<i>Scanned before May 15, 1987</i>
<i>N</i>	<i>Value</i>	<i>Description</i>
14181	0	Scanned before May 15, 1987
1255	1	

Cohort, Exam 1

QC01		Site Name Of Qc repeat scan 01
N	Value	Description
1304	LBIF	Left bifurcation
1398	RBIF	Right bifurcation
865	LANT	Left common carotid: anterior angle
1325	LINT	Left internal carotid
838	LOPT	Left common carotid: optimal angle
829	LPOP	Left popliteal
689	LPOS	Left common carotid: posterior angle
825	RANT	Right common carotid: anterior angle
1306	RINT	Right internal carotid
726	ROPT	Right common carotid: optimal angle
870	RPOP	Right popliteal
696	RPOS	Right common carotid: posterior angle
3765		Missing

QC02		Site Name Of Qc repeat scan 02
N	Value	Description
23	LBIF	Left bifurcation
62	RBIF	Right bifurcation
7	LANT	Left common carotid: anterior angle
75	LINT	Left internal carotid
13	LOPT	Left common carotid: optimal angle
6	LPOS	Left common carotid: posterior angle
60	RANT	Right common carotid: anterior angle
113	RINT	Right internal carotid
70	ROPT	Right common carotid: optimal angle
63	RPOS	Right common carotid: posterior angle
14944		Missing

QC1AAV23		Average near wall width (QC scan 0 1)
N	Value	Description
5613	Range	0.201 - 6.231 (median=0.603 mean=0.6669 std=0.3123)
9823		Missing

Cohort, Exam 1

QC1AAV25		Average artery diameter (QC scan 0 1)
N	Value	Description
10748	Range	3.005429 - 17.93773 (median=7.811243 mean=7.9645602 std=1.5636253)
4688		Missing

QC1AAV45		Average far wall width (QC scan 0 1)
N	Value	Description
7864	Range	0.201 - 5.293 (median=0.647667 mean=0.7093243 std=0.2939172)
7572		Missing

QC1AMN34		Minimum lumen diameter (QC scan 0 1)
N	Value	Description
4610	Range	1.407 - 17.018 (median=6.097 mean=6.1414 std=1.2658)
10826		Missing

QC1AMX23		Maximum near wall width (QC scan 0 1)
N	Value	Description
5613	Range	0.201 - 6.231 (median=0.67 mean=0.785 std=0.396)
9823		Missing

QC1AMX45		Maximum far wall width (QC scan 0 1)
N	Value	Description
7864	Range	0.201 - 5.293 (median=0.737 mean=0.8566 std=0.4037)
7572		Missing

QC2AAV23		Average near wall width (QC scan 02)
N	Value	Description
223	Range	0.201 - 1.973455 (median=0.6365 mean=0.68546 std=0.28824)
15213		Missing

QC2AAV25		Average artery diameter (QC scan 02)
N	Value	Description
449	Range	4.6632 - 14.204 (median=7.954727 mean=8.1531541 std=1.3433452)
14987		Missing

Cohort, Exam 1

QC2AAV45		Average far wall width (QC scan 02)
N	Value	Description
321	Range	0.268 - 2.2311 (median=0.644875 mean=0.7163756 std=0.2787338)
15115		Missing

QC2AMN34		Minimum lumen diameter (QC scan 02)
N	Value	Description
178	Range	2.144 - 10.117 (median=6.2645 mean=6.42560 std=1.08057)
15258		Missing

QC2AMX23		Maximum near wall width (QC scan 02)
N	Value	Description
223	Range	0.201 - 2.412 (median=0.67 mean=0.788 std=0.345)
15213		Missing

QC2AMX45		Maximum far wall width (QC scan 02)
N	Value	Description
321	Range	0.268 - 3.953 (median=0.737 mean=0.8685 std=0.3875)
15115		Missing

QCCNT		Number Of QC repeat scans
N	Value	Description
3760	0	
11189	1	
487	2	

RANAAV23		Average near wall width, right common carotid: anterior angle
N	Value	Description
7100	Range	0.18425 - 2.814 (median=0.6365 mean=0.66851 std=0.21214)
8336		Missing

RANAAV25		Average artery diameter right common carotid: anterior angle
N	Value	Description
14391	Range	5.025 - 14.54509 (median=7.6983 mean=7.80206 std=0.92210)
1045		Missing

Cohort, Exam 1

<i>RANAAV45</i>		<i>Average far wall width, right common carotid: anterior angle</i>
<i>N</i>	<i>Value</i>	<i>Description</i>
10234	Range	0.223333 - 2.76375 (median=0.644875 mean=0.6630253 std=0.1707056)
5202		Missing

<i>RANADEEP</i>		<i>Depth, right common carotid: anterior angle</i>
<i>N</i>	<i>Value</i>	<i>Description</i>
14587	Range	104.5556 - 511 (median=308.7273 mean=315.62908 std=79.13402)
849		Missing

<i>RANAMN34</i>		<i>Minimum lumen diameter, right common carotid: anterior angle</i>
<i>N</i>	<i>Value</i>	<i>Description</i>
5866	Range	2.546 - 11.323 (median=6.231 mean=6.3362 std=0.8354)
9570		Missing

<i>RANAMX23</i>		<i>Maximum near wall width, right common carotid: anterior angle</i>
<i>N</i>	<i>Value</i>	<i>Description</i>
7100	Range	0.201 - 2.948 (median=0.737 mean=0.7635 std=0.2397)
8336		Missing

<i>RANAMX45</i>		<i>Maximum far wall width, right common carotid: anterior angle</i>
<i>N</i>	<i>Value</i>	<i>Description</i>
10234	Range	0.268 - 2.881 (median=0.737 mean=0.7673 std=0.2128)
5202		Missing

<i>RBIAAV23</i>		<i>Average near wall width, right bifurcation</i>
<i>N</i>	<i>Value</i>	<i>Description</i>
6514	Range	0.201 - 4.511333 (median=0.7035 mean=0.80162 std=0.37790)
8922		Missing

<i>RBIAAV25</i>		<i>Average artery diameter, right bifurcation</i>
<i>N</i>	<i>Value</i>	<i>Description</i>
13678	Range	5.3198 - 20.301 (median=9.112 mean=9.3170 std=1.4818)
1758		Missing

Cohort, Exam 1

<i>RBIAAV45</i>		<i>Average far wall width, right bifurcation</i>
<i>N</i>	<i>Value</i>	<i>Description</i>
9113	Range	0.156333 - 4.708273 (median=0.7705 mean=0.86952 std=0.40405)
6323		Missing

<i>RBIADEEP</i>		<i>Depth, right bifurcation</i>
<i>N</i>	<i>Value</i>	<i>Description</i>
14120	Range	154.4444 - 511 (median=352.8182 mean=352.16470 std=67.46754)
1316		Missing

<i>RBIAMN34</i>		<i>Minimum lumen diameter, right bifurcation</i>
<i>N</i>	<i>Value</i>	<i>Description</i>
4645	Range	0.402 - 14.941 (median=6.566 mean=6.8426 std=1.3663)
10791		Missing

<i>RBIAMX23</i>		<i>Maximum near wall width, right bifurcation</i>
<i>N</i>	<i>Value</i>	<i>Description</i>
6514	Range	0.201 - 6.097 (median=0.871 mean=0.9663 std=0.4997)
8922		Missing

<i>RBIAMX45</i>		<i>Maximum far wall width, right bifurcation</i>
<i>N</i>	<i>Value</i>	<i>Description</i>
9113	Range	0.201 - 6.968 (median=0.938 mean=1.1113 std=0.6072)
6323		Missing

<i>RINA AV23</i>		<i>Average near wall width, right internal carotid</i>
<i>N</i>	<i>Value</i>	<i>Description</i>
2858	Range	0.201 - 5.049364 (median=0.6365 mean=0.74744 std=0.41387)
12578		Missing

<i>RINA AV25</i>		<i>Average artery diameter, right internal carotid</i>
<i>N</i>	<i>Value</i>	<i>Description</i>
11668	Range	3.761571 - 16.884 (median=7.92275 mean=7.973905 std=1.286695)
3768		Missing

Cohort, Exam 1

<i>RINAAV45</i>		<i>Average far wall width, right internal carotid</i>
<i>N</i>	<i>Value</i>	<i>Description</i>
6231	Range	0.1675 - 5.695 (median=0.6365 mean=0.74625 std=0.43100)
9205		Missing

<i>RINADEEP</i>		<i>Depth, right internal carotid</i>
<i>N</i>	<i>Value</i>	<i>Description</i>
12693	Range	133.5455 - 510 (median=348.2 mean=348.78 std=70.82)
2743		Missing

<i>RINAMN34</i>		<i>Minimum lumen diameter, right internal carotid</i>
<i>N</i>	<i>Value</i>	<i>Description</i>
1803	Range	0.335 - 10.921 (median=6.633 mean=6.5893 std=1.5041)
13633		Missing

<i>RINAMX23</i>		<i>Maximum near wall width, right internal carotid</i>
<i>N</i>	<i>Value</i>	<i>Description</i>
2858	Range	0.201 - 7.906 (median=0.737 mean=0.8678 std=0.5145)
12578		Missing

<i>RINAMX45</i>		<i>Maximum far wall width, right internal carotid</i>
<i>N</i>	<i>Value</i>	<i>Description</i>
6231	Range	0.201 - 5.829 (median=0.737 mean=0.8963 std=0.5439)
9205		Missing

<i>ROPAAV23</i>		<i>Average near wall width, right common carotid: optimal angle</i>
<i>N</i>	<i>Value</i>	<i>Description</i>
9820	Range	0.1675 - 3.6515 (median=0.6097 mean=0.64196 std=0.19899)
5616		Missing

<i>ROPAAV25</i>		<i>Average artery diameter, right common carotid: optimal angle</i>
<i>N</i>	<i>Value</i>	<i>Description</i>
14416	Range	4.9915 - 13.05891 (median=7.662364 mean=7.7747209 std=0.9417965)
1020		Missing

Cohort, Exam 1

<i>ROPAAV45</i>		<i>Average far wall width, right common carotid: optimal angle</i>
<i>N</i>	<i>Value</i>	<i>Description</i>
12137	Range	0.223333 - 3.551 (median=0.6365 mean=0.66200 std=0.17715)
3299		Missing

<i>ROPADEEP</i>		<i>Depth, right common carotid: optimal angle</i>
<i>N</i>	<i>Value</i>	<i>Description</i>
14501	Range	136.7273 - 510.3333 (median=337.4545 mean=339.09949 std=68.65434)
935		Missing

<i>ROPAMN34</i>		<i>Minimum lumen diameter, right common carotid: optimal angle</i>
<i>N</i>	<i>Value</i>	<i>Description</i>
8898	Range	3.082 - 13.467 (median=6.231 mean=6.3153 std=0.8312)
6538		Missing

<i>ROPAMX23</i>		<i>Maximum near wall width, right common carotid: optimal angle</i>
<i>N</i>	<i>Value</i>	<i>Description</i>
9820	Range	0.201 - 4.087 (median=0.737 mean=0.7476 std=0.2369)
5616		Missing

<i>ROPAMX45</i>		<i>Maximum far wall width, right common carotid: optimal angle</i>
<i>N</i>	<i>Value</i>	<i>Description</i>
12137	Range	0.268 - 3.551 (median=0.737 mean=0.7875 std=0.2400)
3299		Missing

<i>RPOAAV23</i>		<i>Average near wall width, right common carotid: posterior angle</i>
<i>N</i>	<i>Value</i>	<i>Description</i>
9685	Range	0.1407 - 2.576455 (median=0.5896 mean=0.61917 std=0.19008)
5751		Missing

<i>RPOAAV25</i>		<i>Average artery diameter, right common carotid: posterior angle</i>
<i>N</i>	<i>Value</i>	<i>Description</i>
14276	Range	4.757 - 13.10155 (median=7.595364 mean=7.7099384 std=0.9348047)
1160		Missing

Cohort, Exam 1

<i>RPOAAV45</i>		<i>Average far wall width, right common carotid: posterior angle</i>
<i>N</i>	<i>Value</i>	<i>Description</i>
11694	Range	0.2345 - 3.216 (median=0.634977 mean=0.6600530 std=0.1764252)
3742		Missing

<i>RPOADEEP</i>		<i>Depth, right common carotid: posterior angle</i>
<i>N</i>	<i>Value</i>	<i>Description</i>
14377	Range	136.5455 - 511 (median=359.1111 mean=360.61430 std=65.08923)
1059		Missing

<i>RPOAMN34</i>		<i>Minimum lumen diameter, right common carotid: posterior angle</i>
<i>N</i>	<i>Value</i>	<i>Description</i>
8758	Range	2.345 - 11.39 (median=6.164 mean=6.2765 std=0.8114)
6678		Missing

<i>RPOAMX23</i>		<i>Maximum near wall width, right common carotid: posterior angle</i>
<i>N</i>	<i>Value</i>	<i>Description</i>
9685	Range	0.201 - 3.484 (median=0.67 mean=0.723 std=0.231)
5751		Missing

<i>RPOAMX45</i>		<i>Maximum far wall width, right common carotid: posterior angle</i>
<i>N</i>	<i>Value</i>	<i>Description</i>
11694	Range	0.268 - 4.087 (median=0.737 mean=0.7850 std=0.2373)
3742		Missing

<i>RPPAAV23</i>		<i>Average near wall width, right popliteal</i>
<i>N</i>	<i>Value</i>	<i>Description</i>
4168	Range	0.089333 - 1.89275 (median=0.469 mean=0.5057 std=0.1754)
11268		Missing

<i>RPPAAV25</i>		<i>Average artery diameter, right popliteal</i>
<i>N</i>	<i>Value</i>	<i>Description</i>
6216	Range	2.019571 - 11.59844 (median=5.9965 mean=6.07925 std=1.08149)
9220		Missing

Cohort, Exam 1

<i>RPPAAV45</i>		<i>Average far wall width, right popliteal</i>
<i>N</i>	<i>Value</i>	<i>Description</i>
5597	Range	0.2345 - 2.724667 (median=0.583857 mean=0.6191655 std=0.2012597)
9839		Missing

<i>RPPADEEP</i>		<i>Depth, right popliteal</i>
<i>N</i>	<i>Value</i>	<i>Description</i>
6658	Range	151 - 511 (median=387.3318 mean=385.11481 std=63.23348)
8778		Missing

<i>RPPAMN34</i>		<i>Minimum lumen diameter, right popliteal</i>
<i>N</i>	<i>Value</i>	<i>Description</i>
3802	Range	1.34 - 8.911 (median=4.757 mean=4.8406 std=0.9590)
11634		Missing

<i>RPPAMX23</i>		<i>Maximum near wall width, right popliteal</i>
<i>N</i>	<i>Value</i>	<i>Description</i>
4168	Range	0.134 - 2.144 (median=0.536 mean=0.5879 std=0.2119)
11268		Missing

<i>RPPAMX45</i>		<i>Maximum far wall width, right popliteal</i>
<i>N</i>	<i>Value</i>	<i>Description</i>
5597	Range	0.268 - 3.015 (median=0.67 mean=0.736 std=0.267)
9839		Missing

<i>UBMD01</i>		<i>Type Of Study</i>
<i>N</i>	<i>Value</i>	<i>Description</i>
14083	1	
97	2	
1	3	
1248	11	
7	12	

<i>UBMD02</i>		<i>Study number (contact year)</i>
<i>N</i>	<i>Value</i>	<i>Description</i>
15436	1	

Cohort, Exam 1

<i>UBMD03</i>		<i>Reader ID</i>
<i>N</i>	<i>Value</i>	<i>Description</i>
15436	Present	Text suppressed

<i>UBMD04</i>		<i>Sonographer ID</i>
<i>N</i>	<i>Value</i>	<i>Description</i>
15436	Present	Text suppressed

<i>UBMD05</i>		<i>Scan Date</i>
<i>N</i>	<i>Value</i>	<i>Description</i>
15436	Range	11/24/1986 - 03/29/1990

<i>UBMD06</i>		<i>Lesion present?</i>
<i>N</i>	<i>Value</i>	<i>Description</i>
1	y	
14855	N	No
580	Y	Yes

<i>UBMD07</i>		<i>Reading Number - 01 For Ubm</i>
<i>N</i>	<i>Value</i>	<i>Description</i>
15436	1	